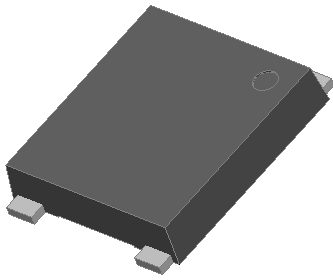


Bridge Rectifiers

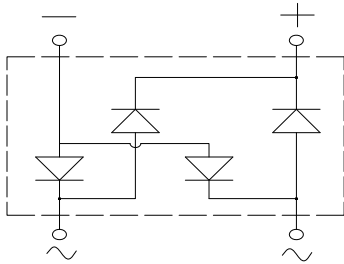


Features

- UL recognition, file #E313149
- Glass passivated chip junction
- Ideal for automated placement
- High surge current capability
- Meets MSL level 1, per J-STD-020, LF maximum peak of 260 °C

Typical Applications

General purpose use in AC/DC bridge full wave rectification for SMPS, lighting ballaster, adapter, battery charger, home appliances, office equipment, and telecommunication applications.



Mechanical Data

- **Package:** YBS
Molding compound meets UL 94 V-0 flammability rating, RoHS-compliant, Halogen-free
- **Terminals:** Tin plated leads, solderable per J-STD-002 and JESD22-B102
- **Polarity:** As marked on body

■ Maximum Ratings (T_a=25°C Unless otherwise specified)

PARAMETER	SYMBOL	UNIT	YBS30005A	YBS3001A	YBS3002A	YBS3004A	YBS3006A	YBS3008A	YBS3010A
Device marking code			YBS30005A	YBS3001A	YBS3002	YBS3004A	YBS3006A	YBS3008A	YBS3010A
Maximum Repetitive Peak Reverse Voltage	V _{RRM}	V	50	100	200	400	600	800	1000
Maximum RMS Voltage	V _{RMS}	V	35	70	140	280	420	560	700
Maximum DC blocking Voltage	V _{DC}	V	50	100	200	400	600	800	1000
Average rectified output current @60Hz sine wave, R-load, T _c =110°C	I _o	A	3.0						
Forward Surge Current (Non-repetitive) @60Hz Half-sine wave, 1 cycle, T _j =25°C	I _{FSM}	A	120						
Forward Surge Current (Non-repetitive) @1ms, square wave, 1 cycle, T _j =25°C			240						
Current squared time @1ms≤t<8.3ms T _j =25°C, Rating of per diode	I ² t	A ² s	59.8						
Storage temperature	T _{stg}	°C	-55 ~ +150						
Junction temperature	T _j	°C	-55 ~ +150						



YBS30005A THRU YBS3010A

■ Electrical Characteristics (T_a=25°C Unless otherwise specified)

PARAMETER	SYMBOL	UNIT	TEST CONDITIONS	YBS30005A	YBS3001A	YBS3002A	YBS3004A	YBS3006A	YBS3008A	YBS3010A
Maximum instantaneous forward voltage drop per diode	V _F	V	I _{FM} =1.5A	1.0						
Maximum DC reverse current at rated DC blocking voltage per diode	I _R	μA	T _j =25°C	5						
			T _j =125°C	100						
Typical junction capacitance	C _j	pF	Measured at 1MHz and Applied Reverse Voltage of 4.0 V.D.C	40						

■ Thermal Characteristics (T_a=25°C Unless otherwise specified)

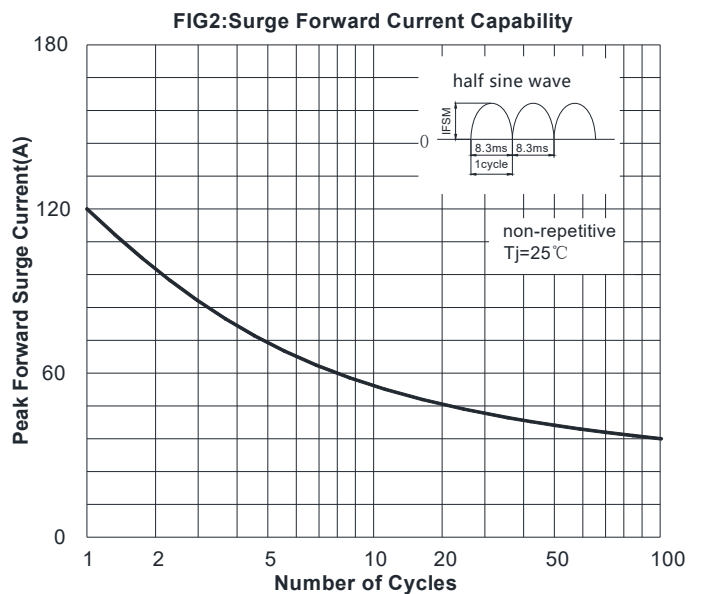
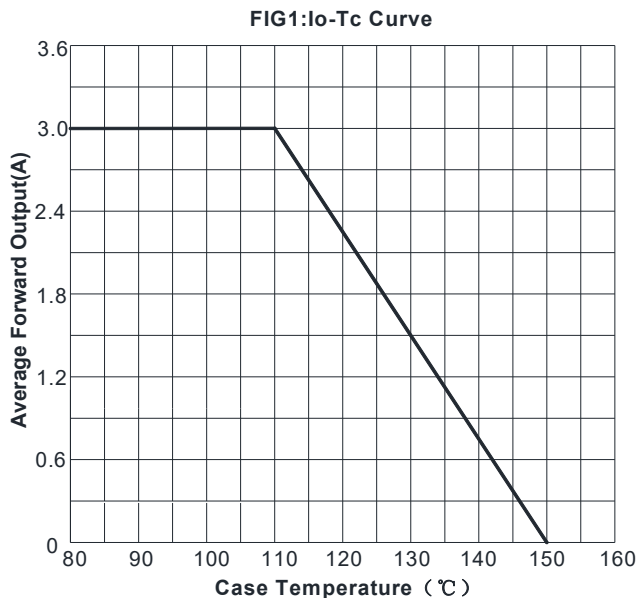
PARAMETER		SYMBOL	UNIT	YBS30005A	YBS3001A	YBS3002A	YBS3004A	YBS3006A	YBS3008A	YBS3010A
Typical Thermal Resistance	Between Junction and Ambient	R _{θJ-A}	°C/W	55.0						
	Between Junction and Lead	R _{θJ-L}		15.0						
	Between Junction and Case	R _{θJ-C}		10.0						

Note: Device mounted on P.C.B with 35mm*25mm*1.7mm.

■ Ordering Information (Example)

PREFERRED P/N	PACKING CODE	UNIT WEIGHT(g)	MINIMUM PACKAGE(pcs)	INNER BOX QUANTITY(pcs)	OUTER CARTON QUANTITY(pcs)	DELIVERY MODE
YBS30005A-YBS3010A	F1	Approximate 0.220	3000	/	42000	13" reel

■ Characteristics(Typical)





YBS30005A THRU YBS3010A

FIG3: Typical Forward Voltage

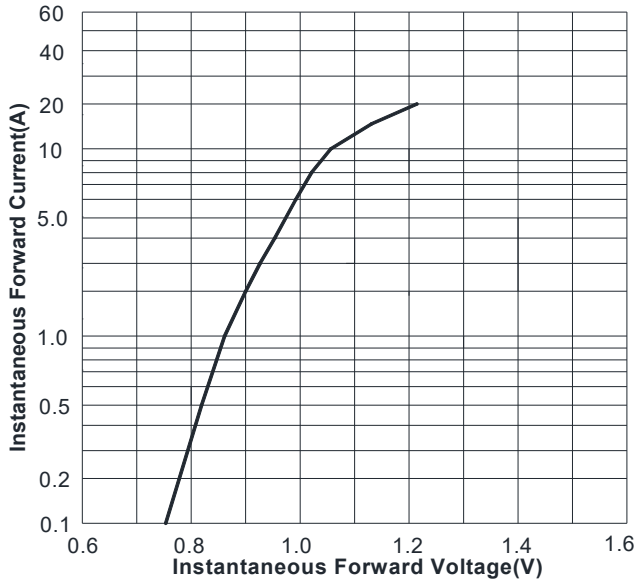
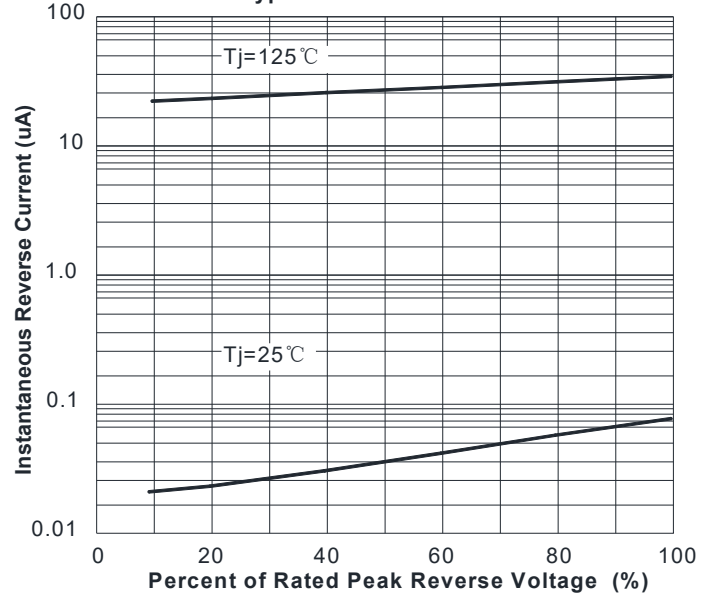
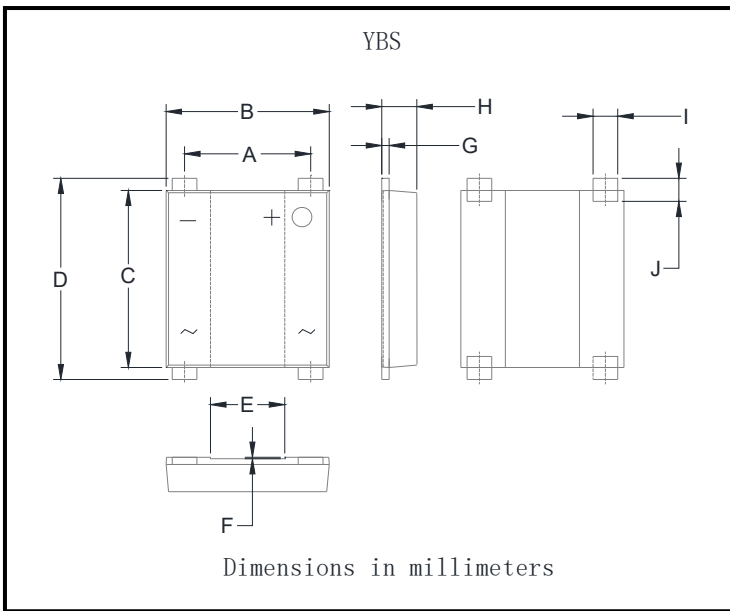


FIG4: Typical Reverse Characteristics

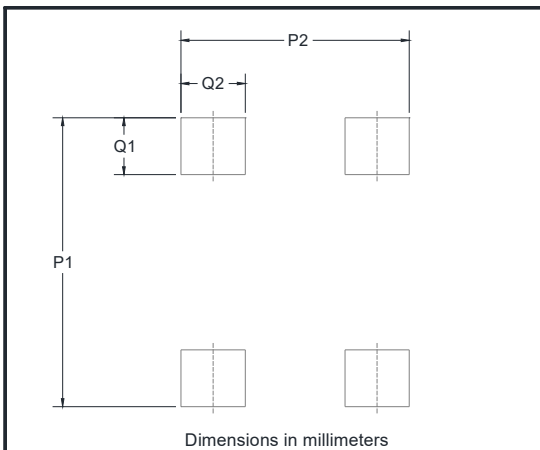


■ Outline Dimensions



YBS		
Dim	Min	Max
A	5.00	5.20
B	6.50	6.70
C	7.20	7.40
D	7.90	8.60
E	2.90	3.10
F	0.04	0.08
G	0.27	0.40
H	1.30	1.50
I	0.95	1.15
J	0.70	1.05

■ Suggested pad layout



Dim	Min
P1	9.15
P2	7.10
Q1	1.80
Q2	2.00



YBS30005A THRU YBS3010A

Disclaimer

The information presented in this document is for reference only. Yangzhou Yangjie Electronic Technology Co., Ltd. reserves the right to make changes without notice for the specification of the products displayed herein to improve reliability, function or design or otherwise.

The product listed herein is designed to be used with ordinary electronic equipment or devices, and not designed to be used with equipment or devices which require high level of reliability and the malfunction of which would directly endanger human life (such as medical instruments, transportation equipment, aerospace machinery, nuclear-reactor controllers, fuel controllers and other safety devices), Yangjie or anyone on its behalf, assumes no responsibility or liability for any damages resulting from such improper use of sale.

This publication supersedes & replaces all information previously supplied. For additional information, please visit our website [http:// www.21yangjie.com](http://www.21yangjie.com) , or consult your nearest Yangjie's sales office for further assistance.